



Housing LIN

Connecting people, ideas and resources

**Housing Learning and
Improvement
Network**

BRE Dementia Home Event –

The Housing Perspective

18 November 2018

Dr Katey Twyford



Housing LIN

Connecting people, ideas and resources

Connect people, ideas & resources to –

- **Inform & improve** housing choices that enable older & disabled people to live independently
- **Share market insight & intelligence** on latest funding, research, policy & innovative developments to spread practice faster
- **Engage with** industry to raise the profile of specialist housing with developers, commissioners & providers to plan, design & deliver aspirational housing for an ageing population

housinglin.org.uk



Housing LIN

Connecting people, ideas and resources

Connecting with the Housing LIN

- **40,000+ subscribers but still the ‘best kept secret’!**
- **Sign up to receive our free quarterly newsletter: Housing with Care Matters & weekly bulletin: LINKs**
- **Check out our free-to-view online resources including our design & dementia pages**
- **Get involved & share your learning on our discussion forum**
- **Follow us on twitter: @HousingLIN & @HousingLINews**
- **Host a future regional Housing LIN meeting**
- **Sponsor our website or an event**

Become A SPONSOR!



Housing LIN

Connecting people, ideas and resources

Housing – Living well with dementia

Home is where most people
want to be in later life



CENTRE FOR
**AGEING
BETTER**

80% of homeowners
aged 65 and over wish to
stay where they are*

*Source: Lloyd, J. (2015) Open Plan: Building a strategic policy towards older owners London: Strategic Society Centre



Housing LIN

Connecting people, ideas and resources

Housing – Living well with dementia

1 in 3



1 in 3 people born in the UK in 2018
will develop dementia in their lifetime

534,621

Number of people in UK with a
dementia diagnosis as of May 2018

but

850,000

ESTIMATED NUMBER OF PEOPLE
LIVING WITH DEMENTIA IN THE UK



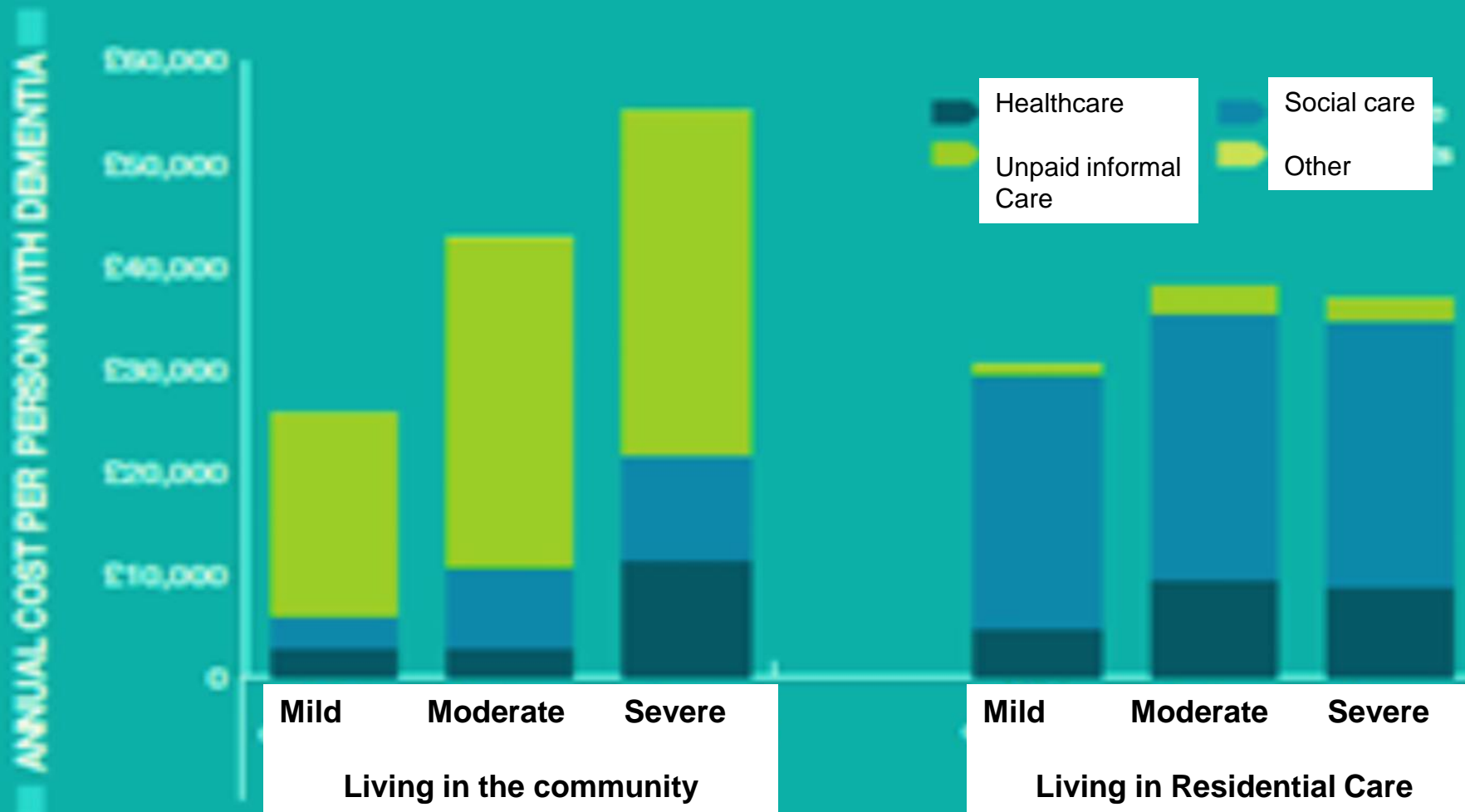
38% of UK population know a family
member or close friend living with dementia

The challenge.....



Housing – Living well with dementia

Cost of dementia by type of residence and severity of condition per person





Housing LIN

Connecting people, ideas and resources

Housing – Living well with dementia

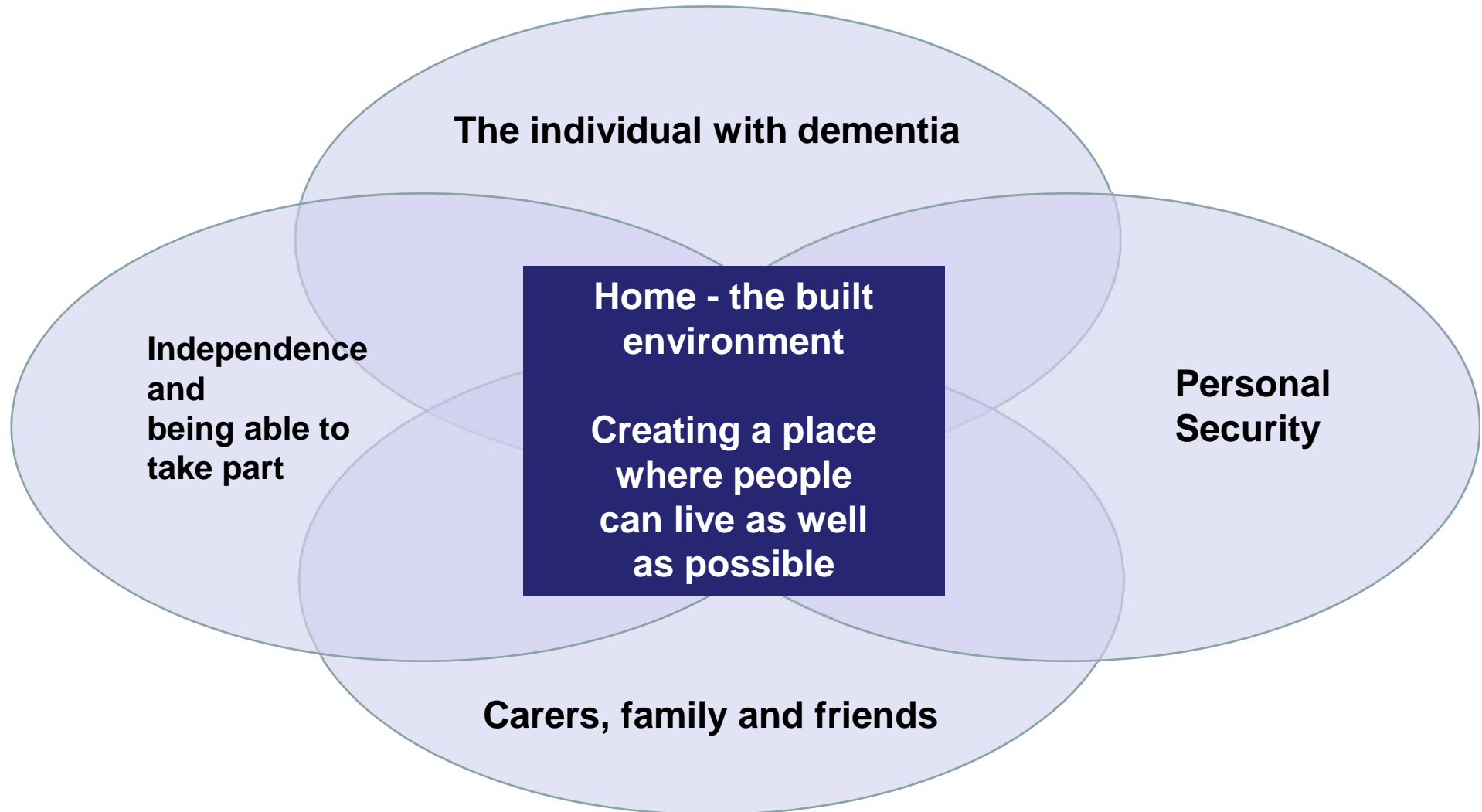
- **Two-thirds of people with dementia live in the community, mostly in mainstream housing**
- **People with dementia in the community want support to help them maintain their independence**
- **It is widely recognised that much of existing housing is poorly suited to the needs of older people & people with dementia in particular**
- **Where people with dementia have moved into specialist housing they identify benefits**
- **Housing with care can play an important role in supporting people with dementia & fill a gap between mainstream homes & care homes**



Housing LIN

Connecting people, ideas and resources

Housing – Living well with dementia





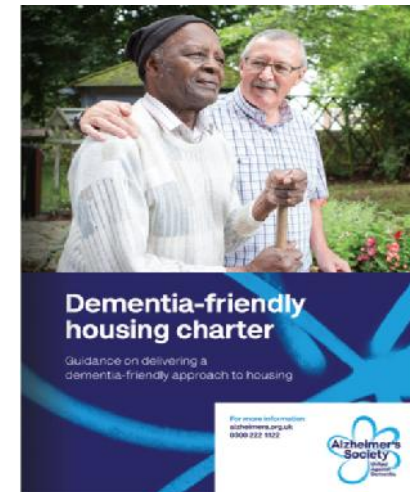
Housing LIN

Connecting people, ideas and resources

Housing – Living well with dementia

- **Dementia & Housing Working Group (DHWG)**
- **Housing & Dementia Research Consortium (HDRC)**
- **Dementia-friendly housing charter**

Sign up to the charter via
Alzheimer's Society website:
alzheimers.org.uk/housingcharter





Housing LIN

Connecting people, ideas and resources

Housing – Living well with dementia

- **Upcoming event:**



Housing - Rising to the Dementia Challenge

21 November 2018 | 12.00pm - 4.30pm | #dementiachallenge #housing

Kings Court | 12 King St | Leeds LS1 2HL



Housing LIN

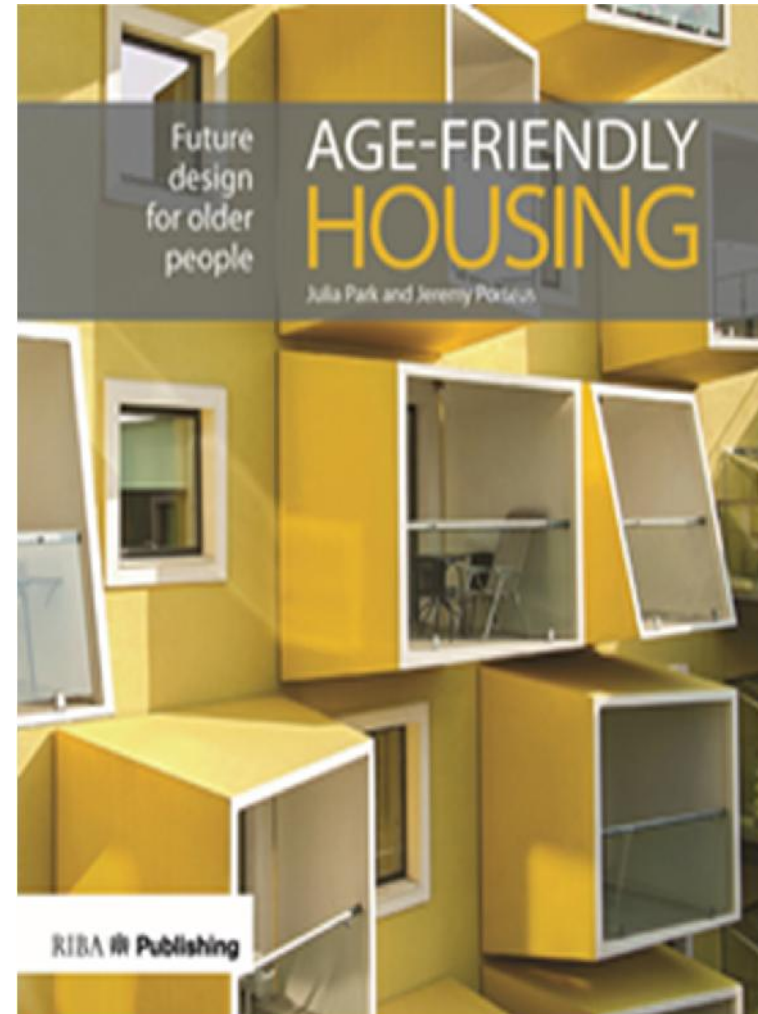
Connecting people, ideas and resources

Housing – Living well with dementia

- **Recent publication:**
- **Useful policy context, Insights, Info boxes & examples of mainstream & specialist housing for older people.**
- **From ordinary housing, bungalows, retirement villages to extra care, residential care & hospices**
- **Co-living & intergenerational living**
- **Adaptations & future proofing our homes, including tech & eco-build**
- **15 case studies (England & Europe)**

£5 discount = AGE5

<https://www.housinglin.org.uk/Topics/type/RIBA-age-friendly-housing/>





Housing LIN

Connecting people, ideas and resources

Connecting with the Housing LIN

**Further info on Dementia & Housing
contact: Vivien Lyons, Dementia Lead,
Housing LIN: dementia@housinglin.org.uk**

**Housing & Dementia Research Consortium:
Interested in joining the HDRC?**

**Contact the Research Coordinator, Dr Julie Barrett at:
j.barrett@worc.ac.uk**



Housing LIN

Connecting people, ideas and resources

Questions/Comments



Housing LIN

C/o EAC

3rd Floor, 89 Albert Embankment

London

SE1 7TP

email: info@housinglin.org.uk

tel: 020 7820 8077

website: www.housinglin.org.uk

Twitter: @HousingLIN & @HousingLINews